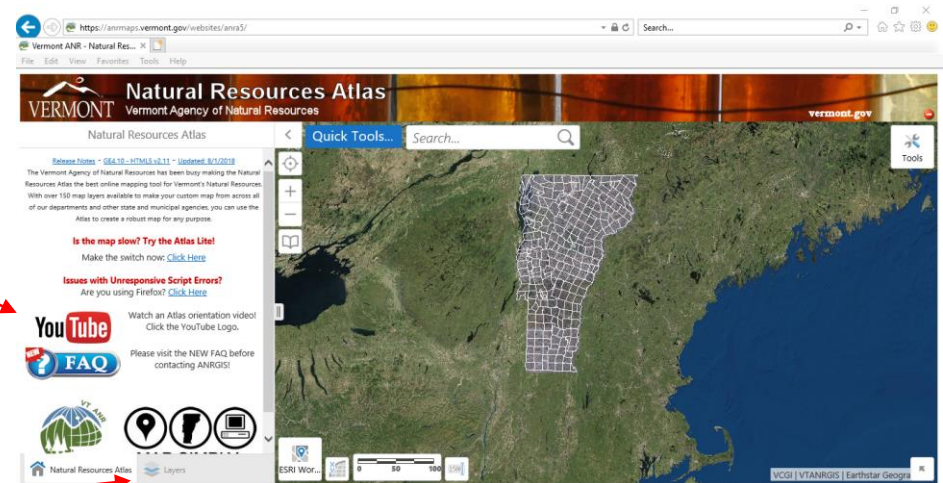


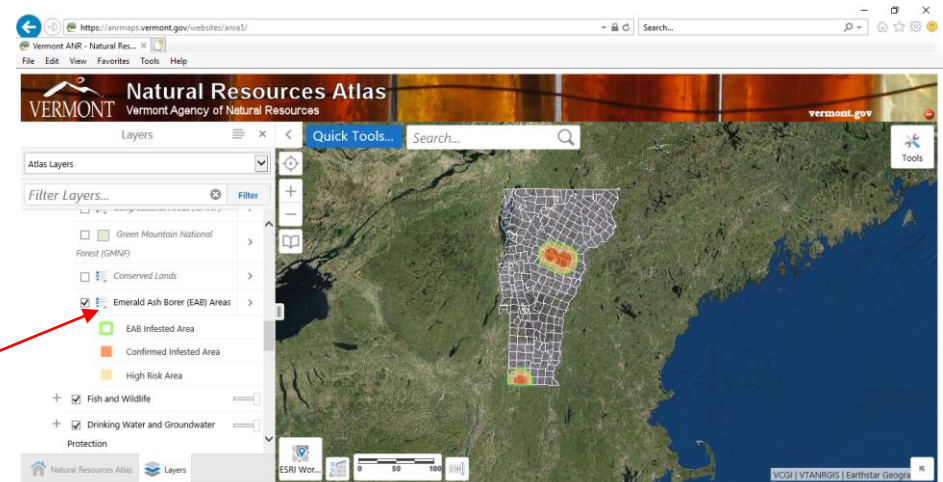
How to Access and Download Maps of EAB Infested Areas from the ANR Atlas

If you haven't used the ANR Atlas before, or you want to know more, the YouTube video offered through the opening screen is very informative.



To View the EAB Areas:

Click on the Layer tab.



Scroll to Forests Parks and Recreation, and click on the Plus sign to view the FPR layers.

Click the check box for Emerald Ash Borer (EAB) Areas.

Click the icon to the right of the check box to see the legend for the EAB layer.

To create a PDF Map:

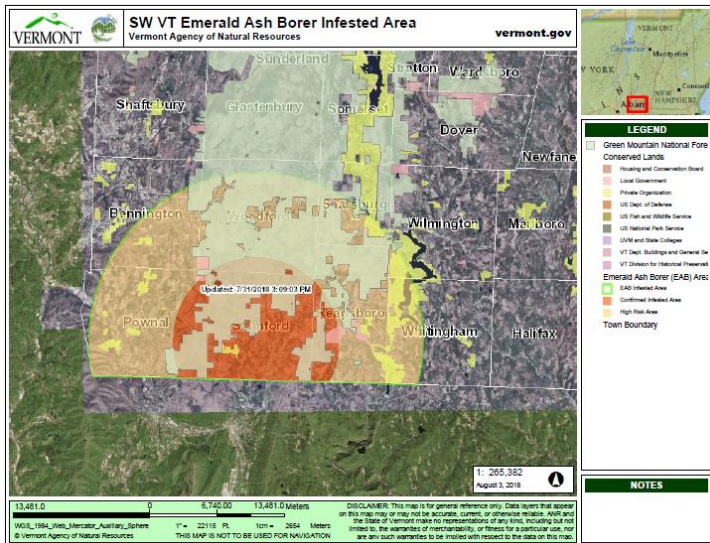
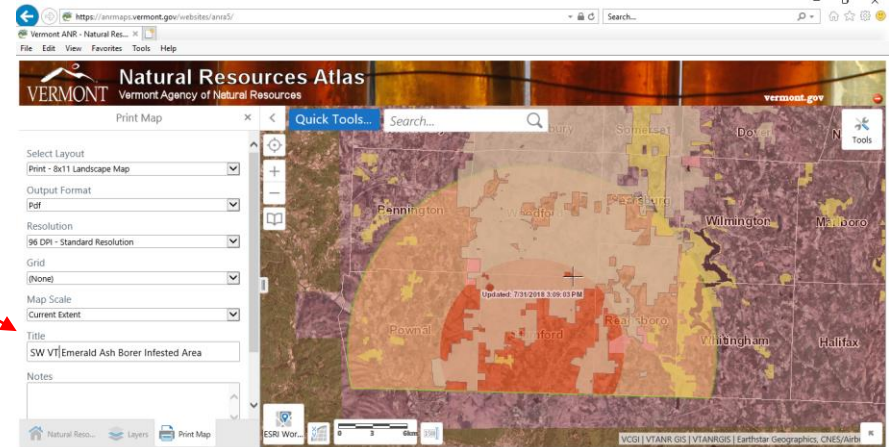
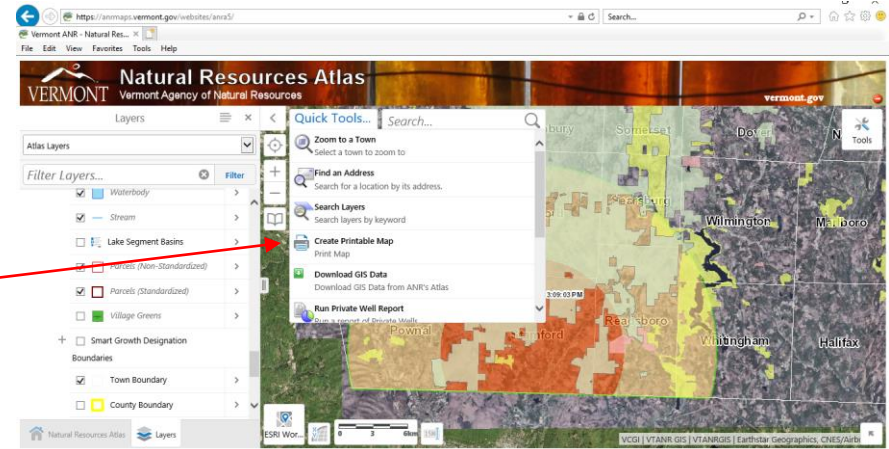
Open the EAB Layer as above.

Zoom in or out and select additional layers, as desired, for the final map.

Click on Quick Tools and Select Create Printable Map

If desired, change settings, title, and notes, and click "Print"

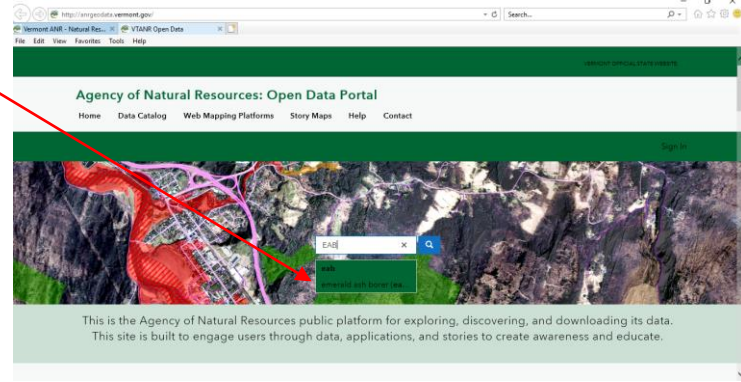
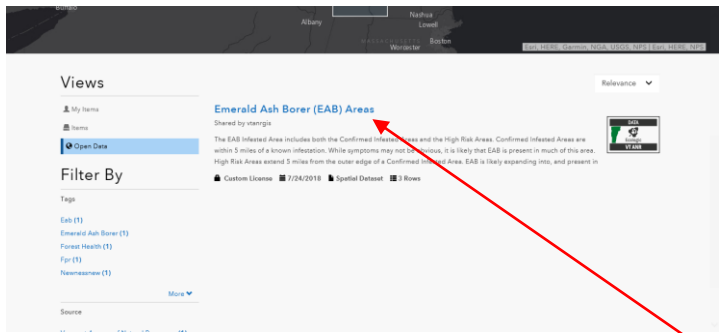
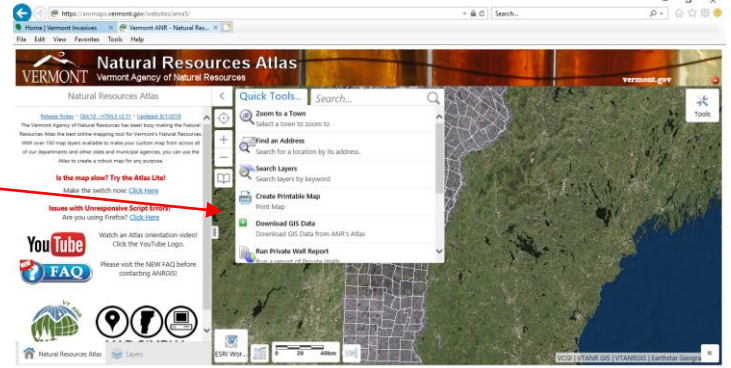
When file is ready, click "Open File"



To Download the EAB Infested Areas as a Shapefile:

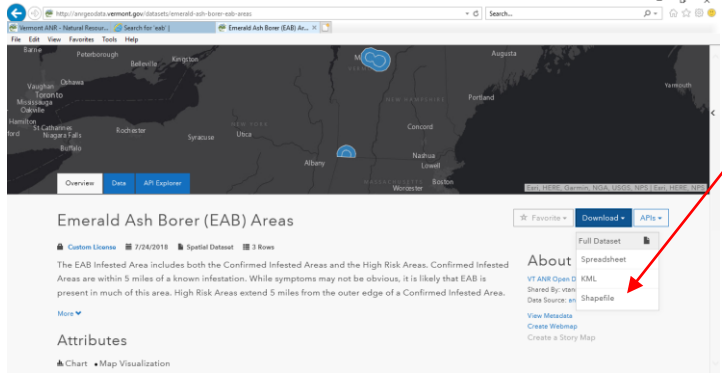
Click on Quick Tools and Select Download GIS Data

Search for EAB, and click on EAB or Emerald Ash Borer (EAB) Areas in the choices provided



In the resulting screen, scroll down to the description and click on the title in blue.

In the resulting screen, scroll down click on Download, and select Shapefile.



The shapefile has three features, described in the *EABArea* field as:

- *EAB Infested Area*: within 10 miles of known infestations
- *Confirmed Infested Area*: within 5 miles of known infestations
- *High Risk Area*: between 5 and 10 miles of known infestations

The symbology in ArcMap may need to be adjusted to view all three features.